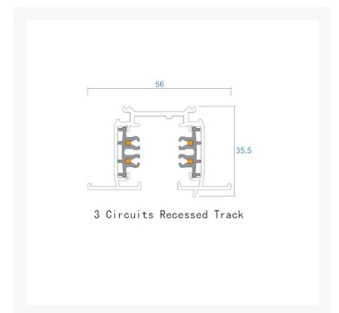
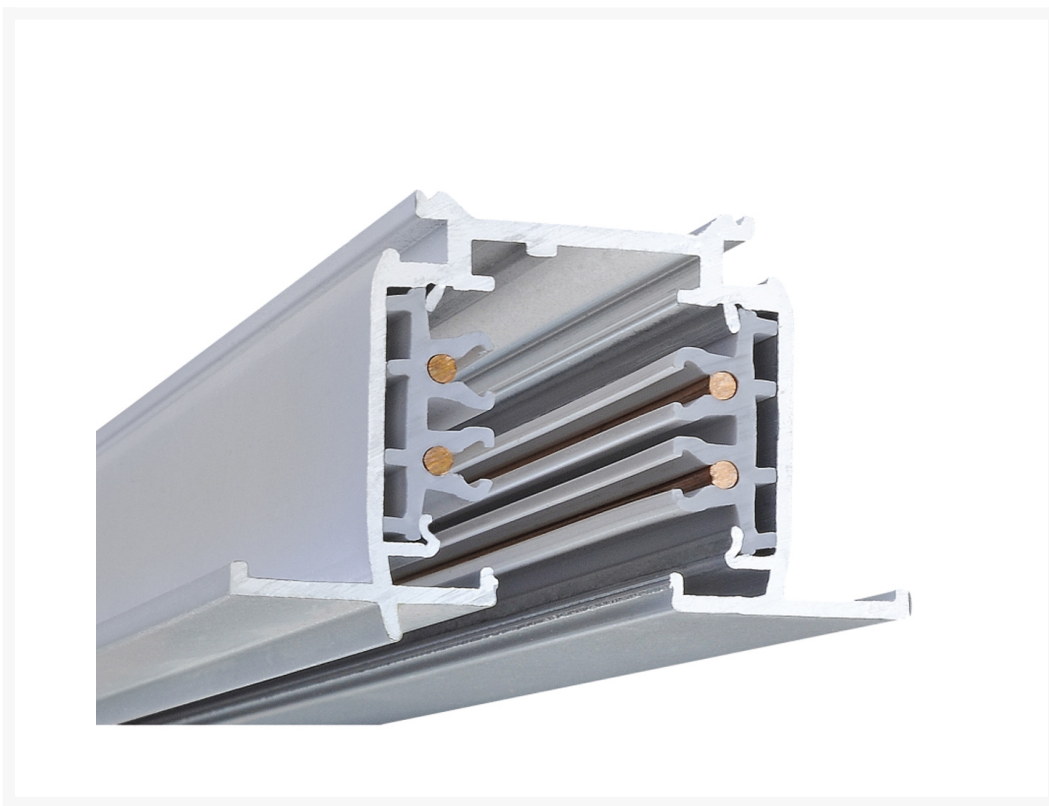


Powergear PRO-R420-W Recessed Multi Circuit Track White 2m

Product Images



Short Description

2m Recessed Multi Circuit Powergear Track White

Description

A recessed multi circuit track suitable for most track spots with multi circuit adapters. The track can easily be shortened by cutting with a metal saw. After cutting the track it is ready to install no need to adjust the wires after cutting the track.

Additional Information

Product Code	PRO-R420-W
Product length	2M
Product width	56mm
Product height	35mm
Colour	White
Voltage	240 Volt
Fitting type	Track System Lighting